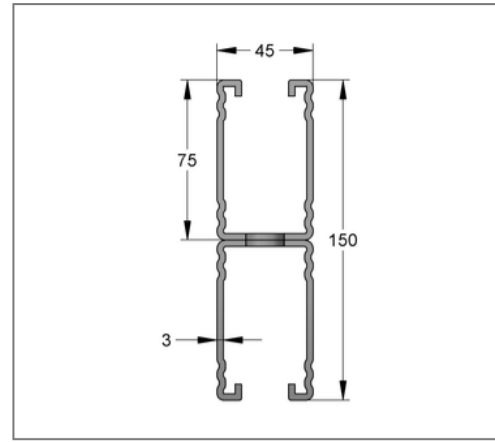
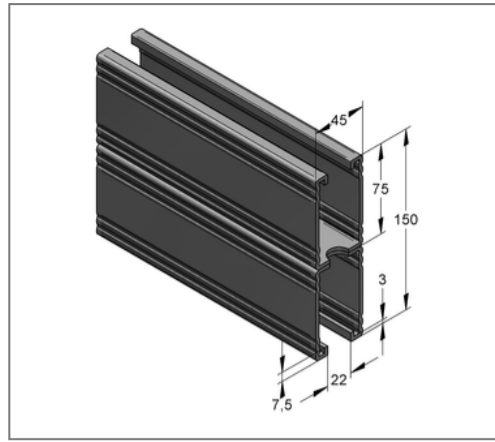
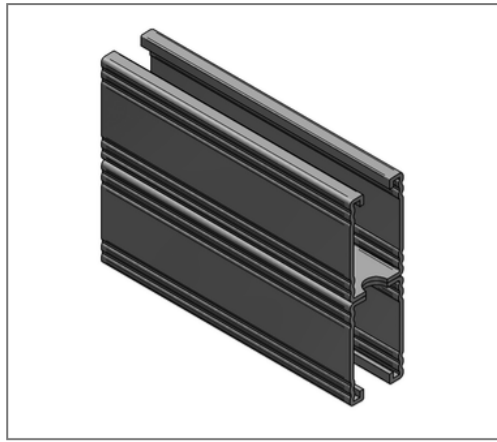


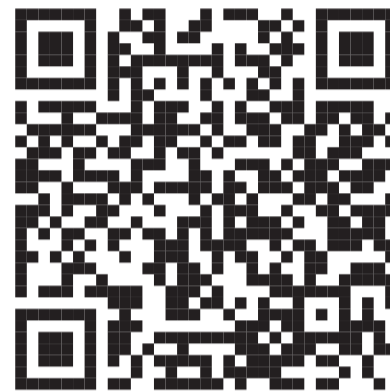
■ Profile rail C-profile double 45 / 150 / 3 mm L= 6 m hot-dip galv.



Commercial details

Part no.	08225061
EAN/GTIN	4250928420824
Packing unit	24 m
Bundle	96 m
Quantity unit	m
Weight	10,24 kg/m
Product group	02-082
Price unit	1

QR code



Certification



Specification

Application area	Medium weight mounting rail with quick connection option.
Specification	Toothed C-profile rail. Double rails are perforated and welded.
Type of attachment	form-locking connection

Product details

Width	45 mm
Height	150 mm
Thickness	3 mm
Length	6 m
Hole-Ø	18,00 mm
Elongated hole	14x45 mm
Expansion elongated hole	18,0 mm
Area (least cross section of the profile rail)	11,33 cm ²
Axial angular impulse I _y	233,12 cm ⁴
Axial angular impulse I _z	43,81 cm ⁴
Grid dimension	105,0 mm
Rail slot width	22 mm

Technical data

Material	Steel
Material type	S235
Surface	hot-dip galvanized
TSP	yes
Corrosion category	C4 high / C5 medium
Surrounding area	Indoor and outdoor areas

Remark

Notice	Full bundles, only
Note	not certified acc. to RAL

Product details

Centroid distance e_o	7,50 cm
Centroid distance e_u	7,50 cm
Centroid distance e_z	2,25 cm
Elastic limit	235 N/mm ²
Radius of inertia i_y	4,53 cm
Radius of inertia i_z	3,85 cm
Section modulus W_y	31,10 cm ³
Section modulus W_z	19,47 cm ³