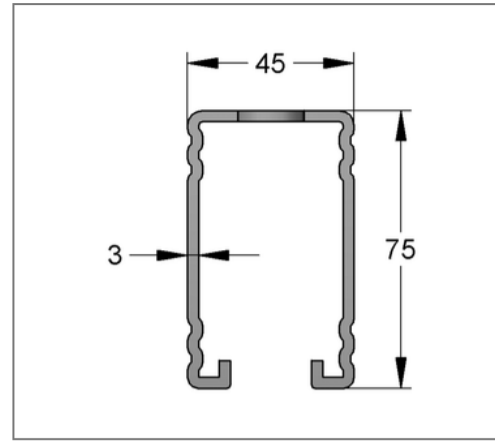
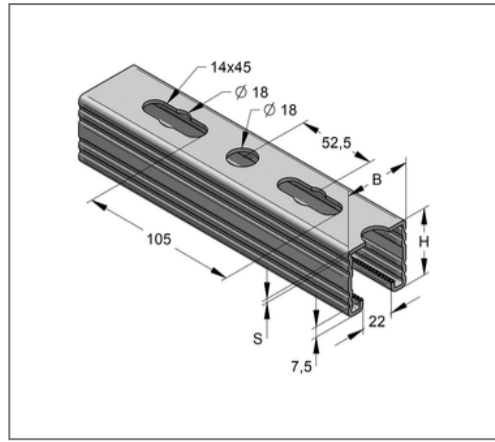
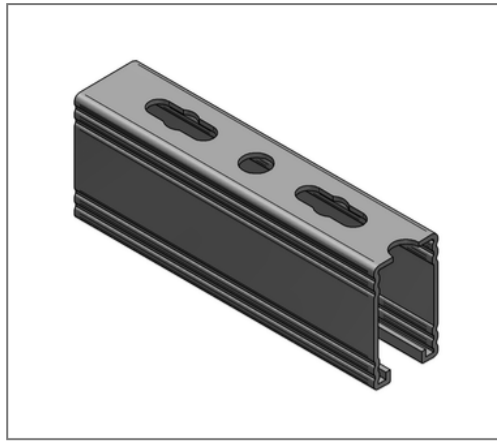


■ Profile rail C-profile 45 / 75 / 3 mm L= 6 m pre-galv.



Commercial details

Part no.	08207562
EAN/GTIN	4250928420787
Packing unit	30 m
Bundle	180 m
Quantity unit	m
Weight	4,82 kg/m
Product group	02-082
Price unit	1

QR code



Certification



Specification

Application area	Medium weight mounting rail with quick connection option.
Specification	Toothed profile.
Type of attachment	form-locking connection

Product details

Width	45 mm
Height	75 mm
Thickness	3 mm
Length	6 m
Hole-Ø	18,00 mm
Elongated hole	14x45 mm
Expansion elongated hole	18,0 mm
Area (least cross section of the profile rail)	5,66 cm ²
Axial angular impulse I _y	35,36 cm ⁴
Axial angular impulse I _z	21,90 cm ⁴
Grid dimension	105,0 mm
Rail slot width	22 mm

Technical data

Material	Steel
Material type	S250
Surface	pre-galvanized
TSP	no
Corrosion category	C2 very high
Surrounding area	Indoor area

Remark

Notice	Full bundles, only
--------	--------------------

Product details

Centroid distance e_o	3,71 cm
Centroid distance e_u	3,79 cm
Centroid distance e_z	2,25 cm
Elastic limit	250 N/mm ²
Radius of inertia i_y	2,50 cm
Radius of inertia i_z	1,96 cm
Section modulus W_y	9,34 cm ³
Section modulus W_z	9,74 cm ³