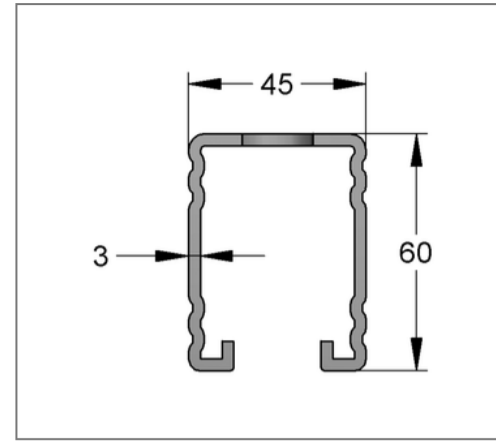
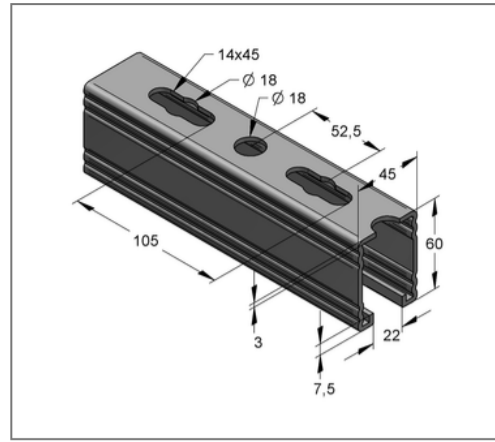
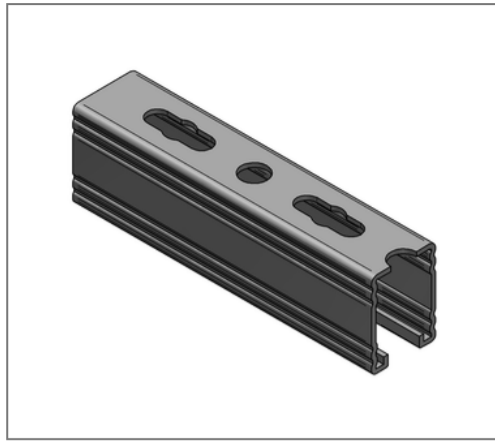


■ Profile rail C-profile 45 / 60 / 3 mm L= 6 m hot-dip galv.



Commercial details

Part no.	0810770
EAN/GTIN	4250928419460
Packing unit	30 m
Bundle	240 m
Price unit	1
Quantity unit	m
Weight	4,35 kg/m
Product group	02-082

QR code



Certification



Specification

Application area	Medium weight mounting rail with quick connection option.
Specification	C-profile rail, perforated and toothed
Type of attachment	form-locking connections and shear hole haunch connections

Technical data

Material	Steel
Material type	S235
Surface	hot-dip galvanized

Product details

Width	45 mm
Height	60 mm
Thickness	3 mm
Length	6 m
Hole-Ø	18 mm
Elongated hole	14x45 mm
Expansion elongated hole	18 mm
Area (least cross section of the profile rail)	4.52 cm ²
Axial angular impulse ly	18.67 cm ⁴
Axial angular impulse lz	17.15 cm ⁴
Grid dimension	105 mm
Rail slot width	22 mm
Centroid distance eo	3.02 cm
Centroid distance eu	2.98 cm
Centroid distance ez	2.25 cm

Remark

Notice	Full bundles, only
Radius of inertia i_y	2.03 cm
Radius of inertia i_z	1.95 cm
Section modulus W_y	6.18 cm ³
Section modulus W_z	7.62 cm ³