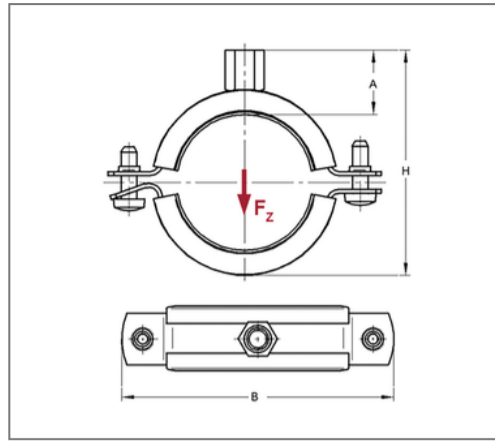
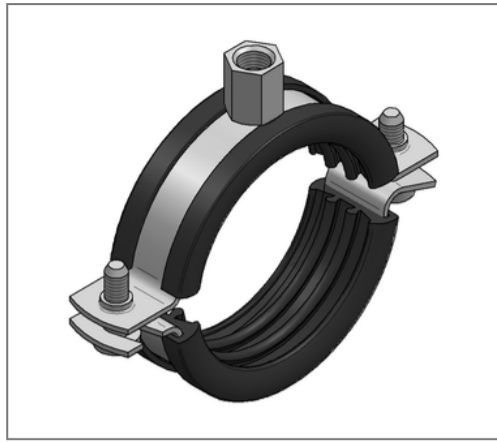


## ■ Pipe clamp Trabant Inox 20x1,5 42 - 46 mm M8/M10 TPE



### Commercial details

Part no.	051003046
EAN/GTIN	4250928453884
Packing unit	50 pcs
Quantity unit	pcs
Weight	0,0956 kg/pc
Product group	13-051
Price unit	100

### QR code



### Certification



### Specification

Application area	Pipe clamp for fastening pipes.
Specification	two-part
Connection	M8/M10
Closure	Snap-in closure

### Technical data

Material	Stainless steel
Material type	V4A
Surrounding area	Indoor and outdoor areas
Insulation thickness	4,5 mm
Temperature resistance	-35 °C - 100 °C
Sound insulation lining	TPE

### Product details

Center distance S	74 mm
Connection height A	22,5 mm
Width B	92 mm
Colour sound insulation lining	black
Height H	71 - 75 mm
Material dimension	20x1,5 mm
Load $F_z$	0,6 kN
Clamping range	42 - 46 mm
Outside pipe diameter inch	val.RohraußendurchmesserZoll. 1 1/4 inch
Closure screw	M6

### Remark

Delivery time	2 working days, ex works
Notice	Other sizes and connection threads on demand.