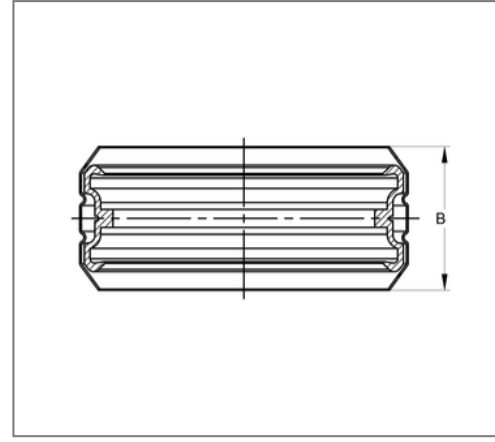
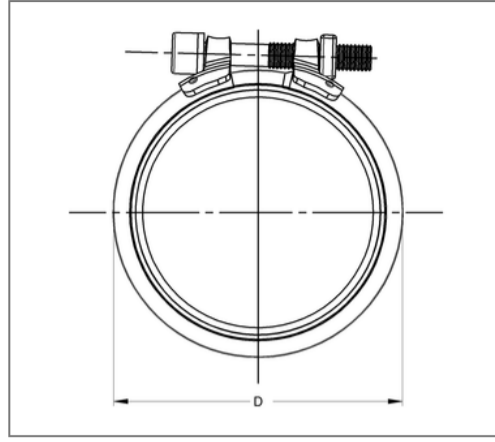


■ Connector SIMA RAPID DN 100 OD 110 mm



Commercial details

| | |
|---------------|---------------|
| Part no. | 447710100 |
| EAN/GTIN | 4250928453686 |
| Packing unit | 100 pcs |
| Quantity unit | pcs |
| Weight | 0,190 kg/pc |
| Product group | 03-447 |
| Price unit | 1 |

QR code



Certification



Specification

| | |
|-------------------------|---|
| Application area | Plug connector for cast iron pipe and fittings. |
| Strength class | 8.8 |
| max. pressure load | 0,5 bar |
| Closure part connection | Welded connection |

Technical data

| | |
|-----------------------------|-------------------------|
| Material | Ferritic chromium steel |
| Material type | 1.452 |
| Material turnbuckle | Stainless steel |
| Material type clamp lock | 1.4301, 1.4510 |
| Material cuff | Rubber EPDM |
| Surrounding area | Indoor area |
| min. temperature resistance | -35 °C |
| max. temperature resistance | 100 °C |
| Colour cuff | black |

Product details

| | |
|--------------------------|----------------|
| Width D | 124,8 mm |
| Outer pipe diameter | 110 mm |
| Width pipe clamp strap B | 45,5 mm |
| Nominal pipe diameter | 100 mm |
| Screw type DIN 4762 | hexagon socket |
| Connector type | Plug connector |