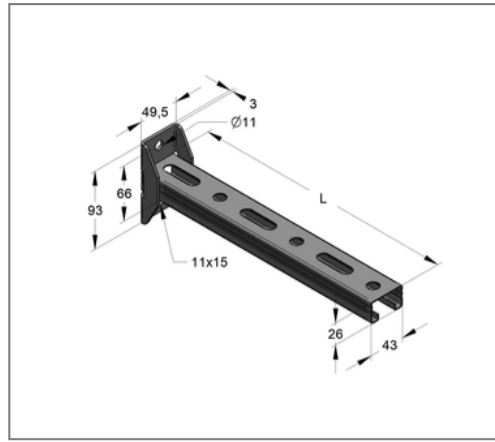
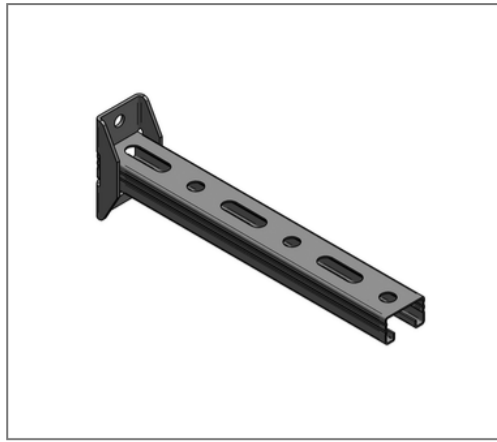


■ Console C-profile 45/26 S L= 420 mm Plate vertical galv.



Commercial details

Part no.	18035042001
EAN/GTIN	4250928456472
Packing unit	20 pcs
Quantity unit	pcs
Weight	0,701 kg/pc
Product group	02-083
Price unit	1

QR code



Specification

Application area Console for the production of cantilever structures for the support of suspended and standing pipe loads.

Technical data

Material	Steel
Surface	galvanized
Corrosion category	C2 very high
Surrounding area	Indoor area

Product details

Width plate	49,5 mm
Length plate	93 mm
Hole distance	66 mm
Plate thickness	3 mm
Width profile	45 mm
Profile height	26 mm
Length console L	420 mm
Elongated hole plate	11x15 mm
Load F1	0,59 kN
Load F2	0,29 kN
Load q0	1,4 kN/m
Profile thickness	1,5 mm