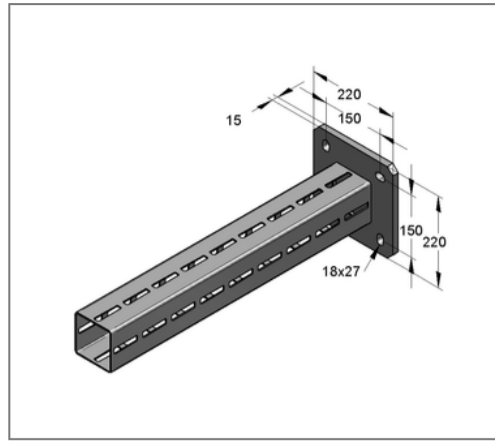
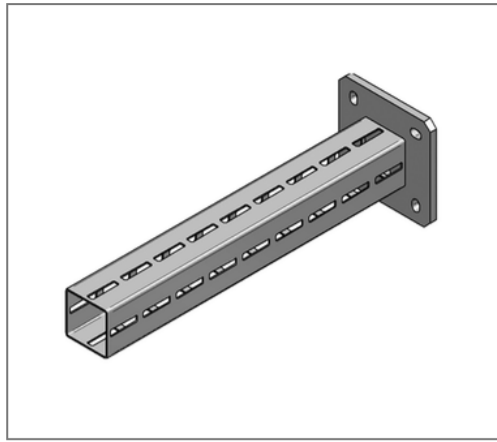


■ Console CENTUM XL 100 L= 1440 mm hot-dip galv.



Commercial details

Part no.	1631001440
EAN/GTIN	4250928436795
Packing unit	1 pcs
Quantity unit	pcs
Weight	18,02 kg/pc
Product group	14-163
Price unit	1

QR code



Certification



Specification

Application area Console for the production of cantilever structures for the support of suspended and standing pipe loads.

Technical data

Material	Steel
Surface	hot-dip galvanized
Corrosion category	C4 high / C5 medium
Surrounding area	Indoor and outdoor areas

Product details

Width plate	220 mm
Length plate	220 mm
Hole distance	150 mm
Plate thickness	15 mm
Width profile	100 mm
Profile height	100 mm
Length console L	1440 mm
Elongated hole plate	27x18 mm
Load F1	8,08 kN
Load F2	4,58 kN
Load q0	5,61 kN/m
Profile thickness	3 mm