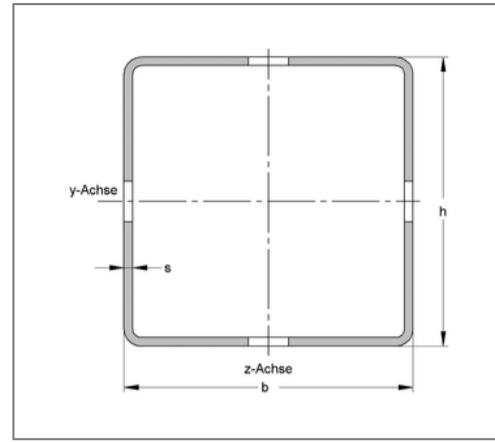
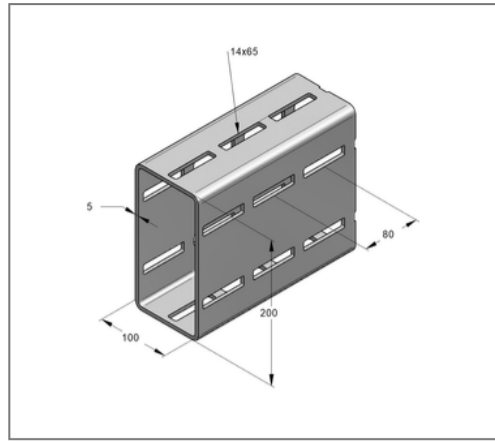
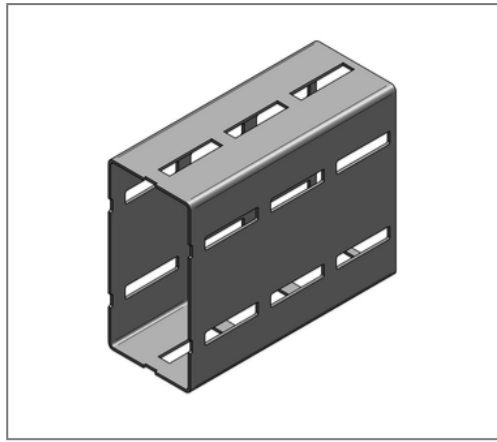


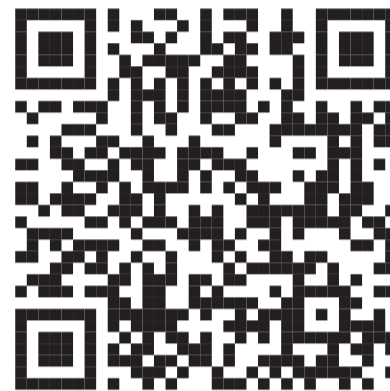
## ■ Profile rail CENTUM XL 200 WST 100 / 200 / 5 mm L= 8 m hot-dip galv.



### Commercial details

Part no.	16020080
EAN/GTIN	4250928449405
Packing unit	8 m
Bundle	32 m
Quantity unit	m
Weight	20,46 kg/m
Product group	14-160
Price unit	1

### QR code



### Certification



### Specification

Application area	Heavy-duty square profile for modular industrial and plant construction.
Specification	modular system, 4-sided without raster in connection with mounting parts, torsion stiffness, high load capacity

### Product details

Width	100 mm
Height	200 mm
Thickness	5 mm
Length	8 m
Elongated hole	14x65 mm
Area (least cross section of the profile rail)	24,15 cm <sup>2</sup>
Axial angular impulse $I_y$	1255,68 cm <sup>4</sup>
Axial angular impulse $I_z$	433,47 cm <sup>4</sup>
Grid dimension	80 mm
Elastic limit	275 N/mm <sup>2</sup>
Radius of inertia $i_y$	7,21 cm
Radius of inertia $i_z$	4,24 cm
Section modulus $W_y$	125,56 cm <sup>3</sup>

### Technical data

Material	Steel
Material type	S235
Surface	hot-dip galvanized
Corrosion category	C4 high / C5 medium
Surrounding area	Indoor and outdoor areas

### Remark

Note	for delivery length 8 m please attend to special delivery conditions
------	--

## Product details

---

Section modulus  $W_z$

86,69 cm<sup>3</sup>