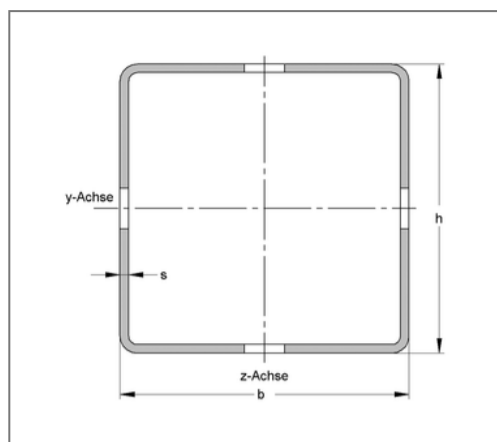
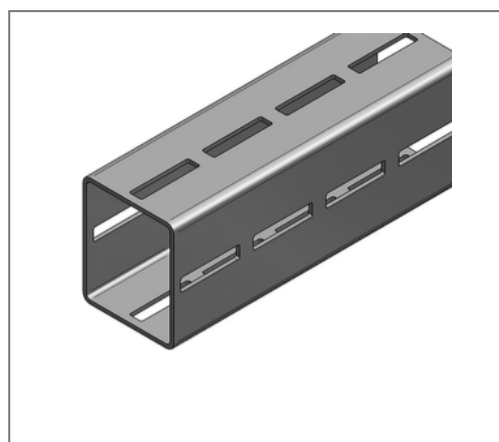


■ Profile rail CENTUM XL 120s 100 / 120 / 5 mm L= 6 m hot-dip galv.



Commercial details

| | |
|---------------|---------------|
| Part no. | 16012061 |
| EAN/GTIN | 4250928449382 |
| Packing unit | 6 m |
| Bundle | 72 m |
| Quantity unit | m |
| Weight | 14,83 kg/m |
| Product group | 14-160 |
| Price unit | 1 |

QR code



Certification



Specification

| | |
|---------------|---|
| Application | Heavy-duty square profile for modular industrial area and plant construction. |
| Specification | modular system, 4-sided without raster in connection with mounting parts, torsion stiffness, high load capacity |

Technical data

| | |
|--------------------|--------------------------|
| Material | Steel |
| Material type | S275 |
| Surface | hot-dip galvanized |
| Corrosion category | C4 high / C5 medium |
| Surrounding area | Indoor and outdoor areas |

Product details

| | |
|--|------------------------|
| Width | 100 mm |
| Height | 120 mm |
| Thickness | 5 mm |
| Length | 6 m |
| Elongated hole | 14x65 mm |
| Area (least cross section of the profile rail) | 17,55 cm ² |
| Axial angular impulse I_y | 372,76 cm ⁴ |
| Axial angular impulse I_z | 284,42 cm ⁴ |
| Grid dimension | 80 mm |
| Elastic limit | 235 N/mm ² |
| Radius of inertia i_y | 4,61 cm |
| Radius of inertia i_z | 4,03 cm |
| Section modulus W_y | 62,12 cm ³ |

Product details

Section modulus W_z

56,88 cm³