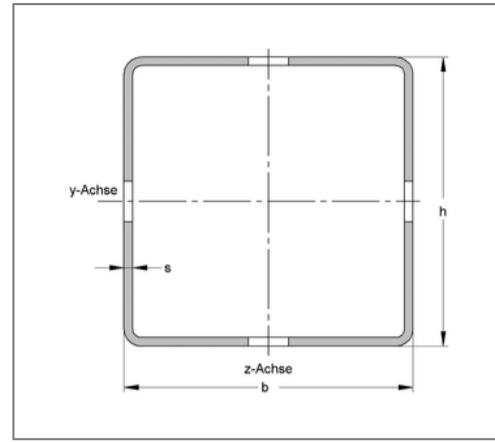
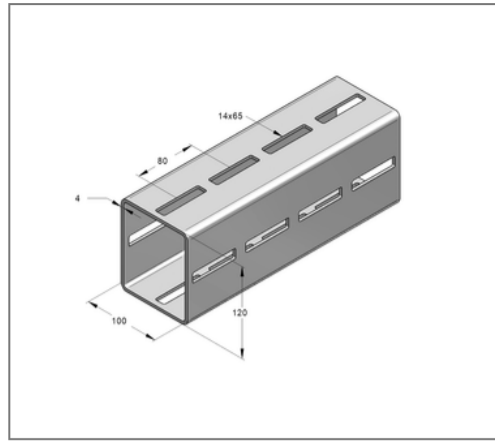
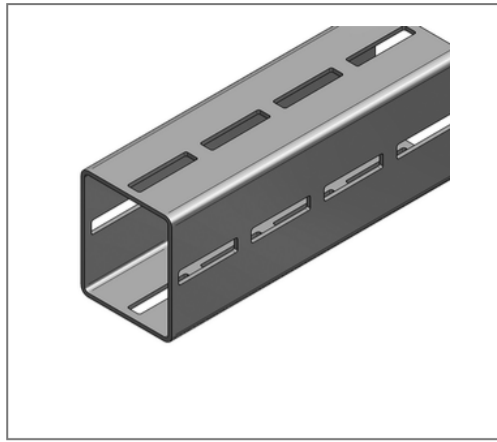


## ■ Profile rail CENTUM XL 120 100 / 120 / 4 mm L= 6 m hot-dip galv.



### Commercial details

Part no.	16012060
EAN/GTIN	4250928436641
Packing unit	6 m
Bundle	72 m
Quantity unit	m
Weight	12,20 kg/m
Product group	14-160
Price unit	1

### QR code



### Certification



### Specification

Application area	Heavy-duty square profile for modular industrial and plant construction.
Specification	modular system, 4-sided without raster in connection with mounting parts, torsion stiffness, high load capacity

### Technical data

Material	Steel
Material type	S275
Surface	hot-dip galvanized
Corrosion category	C4 high / C5 medium
Surrounding area	Indoor and outdoor areas

### Product details

Width	100 mm
Height	120 mm
Thickness	4 mm
Length	6 m
Elongated hole	14x65 mm
Area (least cross section of the profile rail)	14,45 cm <sup>2</sup>
Axial angular impulse $I_y$	310,55 cm <sup>4</sup>
Axial angular impulse $I_z$	237,23 cm <sup>4</sup>
Grid dimension	80 mm
Elastic limit	235 N/mm <sup>2</sup>
Radius of inertia $i_y$	4,64 cm
Radius of inertia $i_z$	4,05 cm
Section modulus $W_y$	51,76 cm <sup>3</sup>

## Product details

---

Section modulus  $W_z$

47,44 cm<sup>3</sup>