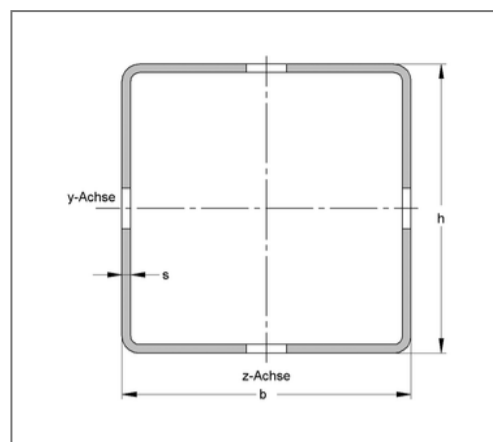
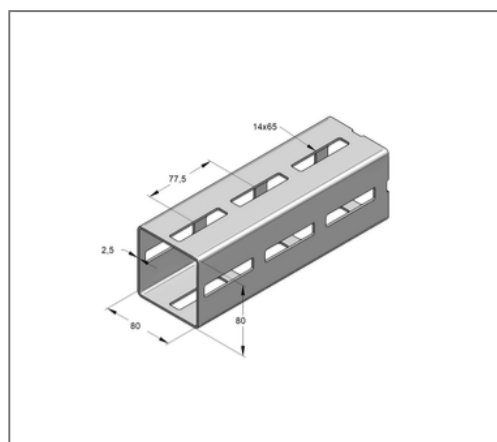
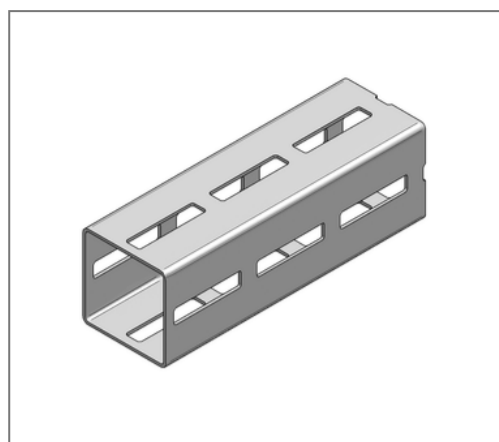


■ Profile rail CENTUM XL 80 80 / 80 / 2,5 mm L= 6 m hot-dip galv.



Commercial details

Part no.	16008060
EAN/GTIN	4250928450340
Packing unit	6 m
Bundle	150 m
Quantity unit	m
Weight	5,51 kg/m
Product group	14-160
Price unit	1

QR code



Certification



Specification

Application area	Heavy-duty profile for modular industrial and plant construction.
Specification	modular system, 4-sided without raster in connection with mounting parts, torsion stiffness, high load capacity

Technical data

Material	Steel
Material type	S275
Surface	hot-dip galvanized

Product details

Width	80 mm
Height	80 mm
Thickness	2,5 mm
Length	6 m
Elongated hole	14x65 mm
Area (least cross section of the profile rail)	6,19 cm ²
Axial angular impulse I_y	64,51 cm ⁴
Axial angular impulse I_z	64,51 cm ⁴
Grid dimension	80 mm
Centroid distance e_o	4,00 cm
Centroid distance e_u	4,00 cm
Centroid distance e_z	4,00 cm
Elastic limit	275 N/mm ²
Radius of inertia i_y	3,23 cm
Radius of inertia i_z	3,23 cm

Product details

Section modulus W_Y	16,13 cm ³
Section modulus W_Z	16,13 cm ³